

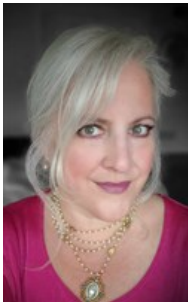


\$ 839,000



73 Crest Boulevard, Palmer Twp, PA 18045

- » Beds: 4 | Baths: 3 Full, 1 Half
- » MLS #: 759483
- » Single Family | 3,353 ft<sup>2</sup>
- » More Info: [73Crest.IsForSale.com](http://73Crest.IsForSale.com)



Autumn Bragg  
REALTOR

(484) 241-0638 (Direct:)  
(610) 250-8880 (Office:)  
[marketing@homespotmedia.com](mailto:marketing@homespotmedia.com)



COLDWELL BANKER  
HERITAGE  
REAL ESTATE

Coldwell Banker Heritage  
2426 Emrick Blvd.  
Bethlehem, PA 18020  
(610) 250-8880

#### Remarks

Exceptional French Provincial home in desirable Parkview Estates, offering style & gracious living. First floor primary suite & upscale amenities. 4 bedrooms, 3.5 baths, 2 gas fireplaces & 4 walk-in closets. Smart Home. New two-zone HVAC with warranty. New appliances. New security system. Sound system. Garage with new RaceDeck flooring. Home is perfectly located for commuter convenience near highways, hospitals, schools, shopping & Historic Easton restaurants. Formal greeting area w/double doors & two-story foyer. Refinished hardwood floors & arched doorways. Big & beautiful kitchen w/private entrance, eggshell-colored cabinets w/antique glaze, workspace w/island, chef-grade stove w/pot-filler & stainless appliances. Open dining area accented by fireplace w/extraordinary, raised hearth. Adjacent mudroom & laundry w/window. Pocket French doors open to the family room w/fireplace & double atrium doors overlooking slip-proof patio. First floor dining room, powder room & living room w/wainscoting & French doors. Tranquil first floor primary suite w/tray ceiling, walk-in closet & private bath w/spa tub, dual sinks w/senarate vanities & shower. Second floor offers flex snace at its best. Sitting area overlooks foyer. 18'x16' bedroom w/ensuite bath and walk-in

